

**CHAPTER**

**37**

**VACUUM**

CESSNA®  
**MODEL 208**  
ILLUSTRATED PARTS CATALOG

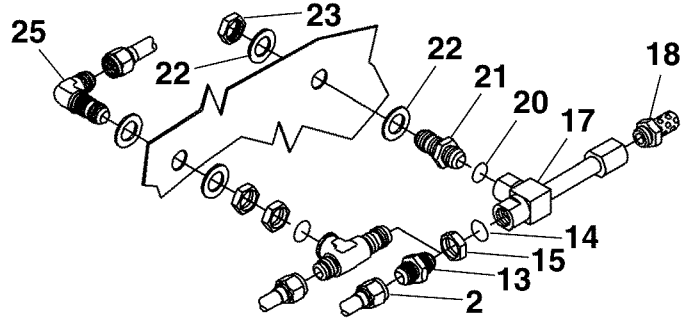
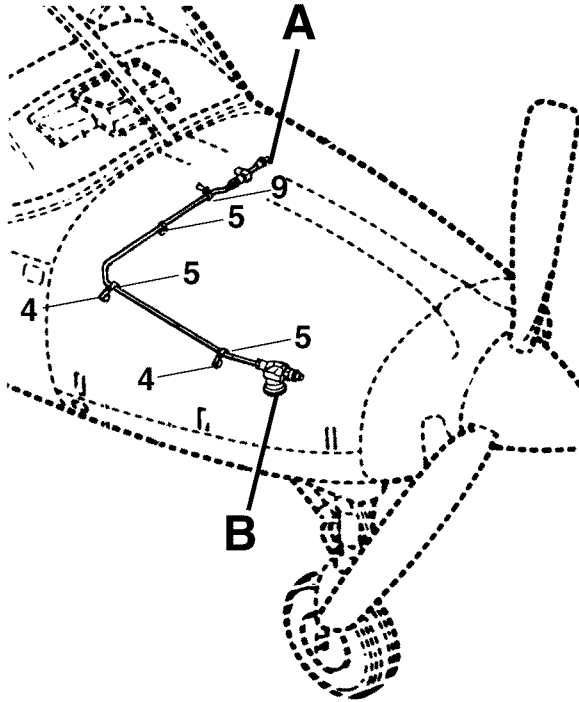
<u>CHAPTER SECTION SUBJECT</u>		<u>NUMBER OF PAGES</u>	<u>DATE</u>
37 - TITLE			
37 - LIST OF EFFECTIVE PAGES			
37 - RECORD OF TEMPORARY REVISIONS			
37 - TABLE OF CONTENTS			
37-10-00	Figure 01	2	Sep 1/2016

CESSNA®  
**MODEL 208**  
ILLUSTRATED PARTS CATALOG

<u>SUBJECT</u>	<u>CHAPTER SECTION SUBJECT</u>	<u>FIGURE</u>	<u>EFFECTIVITY</u>	
			<u>START</u>	<u>END</u>
VACUUM SYSTEM	37-10-00	01		

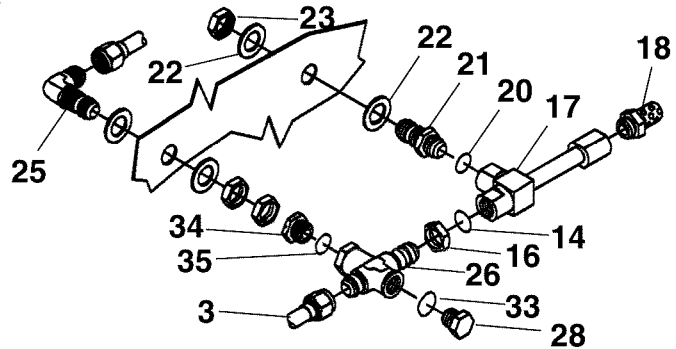
CESSNA®  
**MODEL 208**  
 ILLUSTRATED PARTS CATALOG

A24664



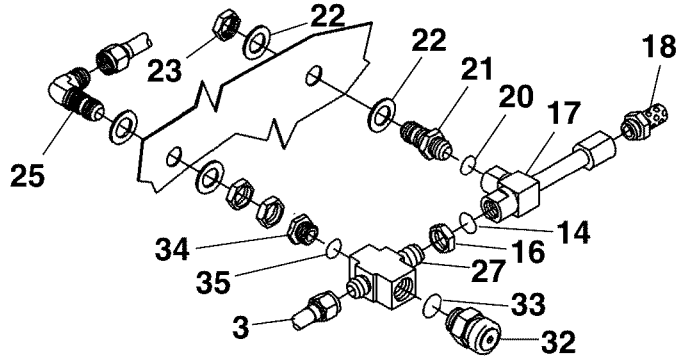
**DETAIL A**

AIRPLANES 2080001 THRU 20800143 AND  
 208B0001 THRU 208B0143  
 NOT INCORPORATING SK208-64 OR SK208-65



**DETAIL A**

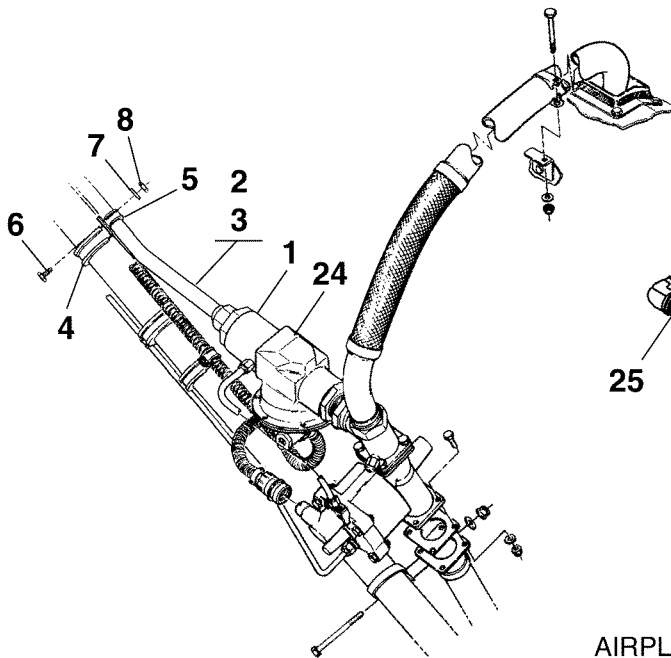
AIRPLANES 2080001 THRU 20800143 AND  
 208B0001 THRU 208B0143  
 INCORPORATING SK208-64 OR SK208-65  
 20800144 THRU 20800221 AND  
 208B0144 THRU 208B0316  
 NOT INCORPORATING SK208-112



**DETAIL A**

AIRPLANES 2080001 THRU 20800221 AND  
 208B0001 THRU 208B0316  
 INCORPORATING SK208-112  
 20800222 AND ON AND 208B0317 AND ON

2610X7005  
 A2614T2037  
 A2614T2037A  
 A2614T2037B  
 B26143022



**DETAIL B**

VACUUM SYSTEM  
 FIGURE 01 (SHEET 1)

**CESSNA®  
MODEL 208  
ILLUSTRATED PARTS CATALOG**

FIG ITEM	PART NUMBER	NOMENCLATURE	UNITS PER ASSY	
			1 2 3 4 5 6 7	
01		VACUUM SYSTEM		RF
-				
1	AS5174-1010	. UNION		01
2	2600100-34	. LINE ASSY-EJECTOR SUPPLY REFER TO NOTE 1	0001	0143
			B0001	B0143
3	2601067-24	. LINE ASSEMBLY-EJECTOR SUPPLY REFER TO NOTE 2	0144	& ON
			B0144	B4999
- 3A	2650056-8	. LINE ASSEMBLY-EJECTOR SUPPLY	B5000	B5314
- 3B	2650056-16	. LINE ASSEMBLY-EJECTOR SUPPLY	B5315	& ON
		ATTACHING PARTS		
4	MS21919DG20	. CLAMP		02
5	MS9025-09	. CLAMP		03
6	MS35207-264	. SCREW		02
7	NAS1149F0332P	. WASHER		02
8	MS21043-3	. NUT		02
9	MS9025-09	. CLAMP		01
- 10	AN520-10R18	. SCREW		01
- 11	NAS1149F0332P	. WASHER		02
- 12	NAS43HT3-28	. SPACER		01
		*—		
13	AS5174-1010	. UNION REFER TO NOTE 1	0001	0143
			B0001	B0143
14	MS9385-10	. O-RING		01
15	AS5178-10	. NUT REFER TO NOTE 1	0001	0143
			B0001	B0143
16	NAS509-14	. NUT REFER TO NOTE 2	0144	& ON
			B0144	& ON
17	19E32-2A	. EJECTOR	V99551	01
18	2601061-1	. EXHAUST FITTING FSO 2601061-2	0001	0129
			B0001	B0086
- 19	2601061-2	. EXHAUST FITTING	0130	& ON
			B0087	& ON
20	MS9385-10	. O-RING		01
21	AN832-10	. UNION		01
22	NAS1149F1490P	. WASHER		02
23	AS5178-10	. NUT		01
24		. BLEED AIR HEATER INSTL REFER TO 21-41-00 FIGURE 01		RF
25		. DE-ICE SYSTEM REFER TO 30-10-00 FIGURE 01		RF
26	2613412-1	. CROSS ASSY FSO 2613418-1 REFER TO NOTE 2	0144	0156
			B0144	B0187
27	2613418-1	. CROSS	0157	& ON
			B0188	& ON
28	MS21913D12	. PLUG REFER TO NOTE 3	0144	0186
			B0144	B0215
- 29	AS5169D12	. PLUG & BLEEDER ALT FOR MS21913D12 REFER TO NOTE 3	0187	0196
			B0216	B0226
- 30	AS5174D1008	. REDUCER REFER TO NOTE 3	0197	0221
			B0227	B0316
- 31	AN929-4W	. CAP ASSY REFER TO NOTE 3	0197	0221
			B0227	B0316
32	RV05-268	. RELIEF VALVE REFER TO NOTE 4	V91816	0222
			B0317	& ON
33	MS9385-12	. O-RING REFER TO NOTE 2	0144	& ON
			B0144	& ON
34	AS5169D10	. PLUG REFER TO NOTE 2	0144	& ON
			B0144	& ON
35	MS9385-10	. O-RING REFER TO NOTE 2	0144	& ON
			B0144	& ON

NOTE 1—AIRPLANES NOT INCORPORATING SK208-64 OR SK208-65.

NOTE 2—AIRPLANES -0144 AND ON AND -B0144 THRU -B4999, AND AIRPLANES -0001 THRU -0143 AND -B0001 THRU -B0143 INCORPORATING SK208-64 OR SK208-65.

NOTE 3—AIRPLANES NOT INCORPORATING SK208-112.

NOTE 4—AIRPLANES -0001 THRU -0221 AND -B0001 THRU -B0316 INCORPORATING SK208-112.